



**NHS**

**Dorset HealthCare  
University**

NHS Foundation Trust

Available  
during  
school term  
time only.

## ParentLine 5-19

A confidential text messaging service for  
parents and carers of children aged 5-19.

Message a member of the School Nursing team  
for confidential advice on: 07312 263131

We can help with:

- healthy eating
- toileting
- development
- behaviour and more.
- weight management
- Sleep
- hearing

We might inform someone if we were concerned about your safety but we would usually speak to you first. Your messages are stored and can be seen by other health care staff who follow the same confidentiality rules. We aim to reply to you within one working day and you should get an immediate message back to confirm we have received your text. Text will only be seen between (9am and 4pm). If you need help before you hear back from us contact your GP, nearest walk in centre or dial 111. Our text number does not receive voice calls or MMS picture messages. We support messaging from UK mobile numbers only (which does not include messages sent from landlines, international mobile numbers and some 'number masking' mobile apps). To prevent the health professional from sending messages to you, text STOP to our number. Messages are charged at your usual rates.



# Welcome to Reception at St Luke's Primary School





## Who should I go to for help at St Luke's?

Administration Team - [\\_stlukes@coastalpartnership.co.uk](mailto:_stlukes@coastalpartnership.co.uk) 01202 514396/ 01202 516499

- All office administration tasks including attendance, lunch ordering and messages and payments
- Support surrounding school trips
- Important messages for the day
- After school club
- To arrange a meeting or contact with SLT or Headteacher
- For support using Arbor, including booking/payments for trips, parents' evenings etc
- Reporting absences
- Change of person picking up at end of the day

Class Teachers - [stlukes@coastalpartnership.co.uk](mailto:stlukes@coastalpartnership.co.uk)

- My child has come home unhappy about something such as schoolwork, peers in class or friendships.
- My child's belongings have gone missing.
- Homework questions
- Activities/school trips or questions about the learning.
- Questions regarding learning needs and achievement.

Phase Leaders - [stlphaseleaders@coastalpartnership.co.uk](mailto:stlphaseleaders@coastalpartnership.co.uk)

- After speaking to class teachers my child is still coming home unhappy about something such as schoolwork,
- Curriculum and learning information.

Family Support worker - [stlukesfsw@coastalpartnership.co.uk](mailto:stlukesfsw@coastalpartnership.co.uk)

- Specific pastoral needs of pupils including – anxiety, bereavement, behaviour management
- Family matters including support from external agencies – Early Help Team, Social Care, foodbanks and other agencies for support.
- Safeguarding concerns

SENDCO - [stlukessenco@coastalpartnership.co.uk](mailto:stlukessenco@coastalpartnership.co.uk)

- After talking to the class teacher surrounding specific educational needs – further advice is needed.
- Specific learning needs of pupils including disabilities and more in-depth medical needs.
- Support from external agencies
- EHCP or EHCNA information

Senior Leadership Team- [stlukes@coastalpartnership.co.uk](mailto:stlukes@coastalpartnership.co.uk)

- After speaking to the class teacher and Phase Leader my child is still unhappy with schoolwork, peers and friendships (including bullying)
- Safeguarding concerns
- Concerns regarding staff
- Unacceptable behaviour on the school site from adults including rude or threatening behaviour.

# Our Vision as a School

"Being the best we can."

As a **Church of England** primary school, our values and ethos place our **children at the heart** of all we do, enabling them to feel safe, nurtured, respected and **included** within our **community**.

We celebrate diversity, develop resilience and **build trust** in one another. Together we **enjoy** our learning on each day, we encourage and develop **creativity**, and we **inspire** everyone to **achieve** and have faith for a better tomorrow and a **fulfilling future** ahead.

*"For I know the plans I have for you.....Plans to give you hope and a future" Jeremiah 29:11*



# OUR NON-NEGOTIABLES

Courage • Compassion • Respect



## Respect

- We always use kind words and good manners.
- We take pride in our uniform and school environment.
- We learn from our mistakes and accept consequences for unacceptable behaviour choices.
- We give all adults our full attention, including being ready to learn and following instructions.



## Compassion

- We are kind and polite to all members of the St Luke's family and wider community.
- We are safe, calm and quiet around our school – holding the stillness when needed.
- When playing, we play safely and are inclusive of everybody.



## Courage

- We strive for high standards and have high expectations in all that we do, both at school and through our home learning.
- We support ourselves and others – always in an appropriate way.
- We persevere to overcome challenges and grow our independence throughout our St Luke's journey.



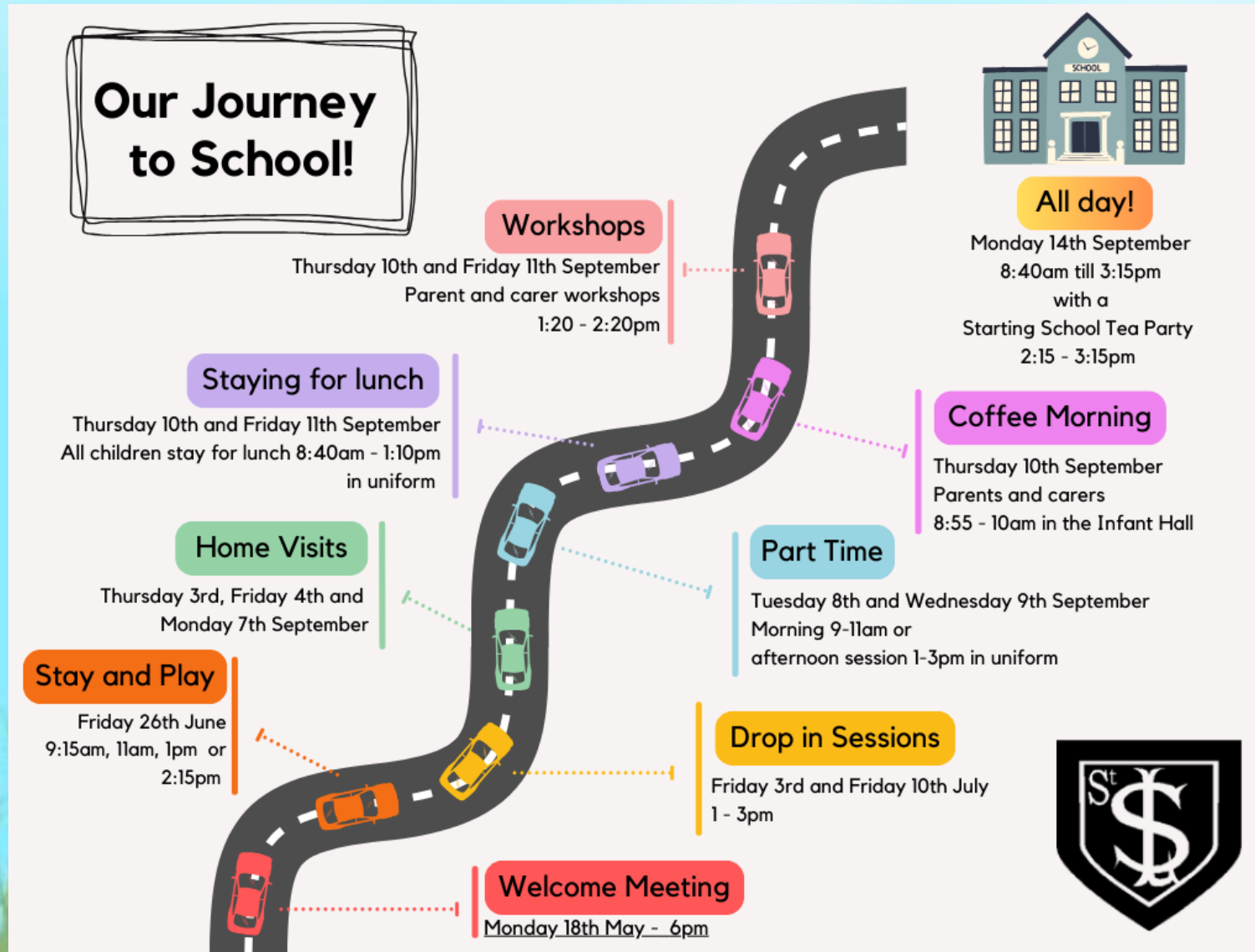
# Our Vision for Reception...and beyond

We will provide your children with....

- a love of learning
- the freedom and confidence to explore and ask questions
- independence
- social skills
- the confidence to value themselves and others
- resilience



# What can you expect from transition?



# From September

- Parent workshops
- Opportunities for you to come into school for your child to share their learning with you
- ‘Stay and Play’ sessions
- Formal parent’s evenings during the academic year
- Other events that will be announced throughout the year

# How do we learn?



- Big Questions – gives the learning a focus
- Play – children learn best through exploring and investigating through play
- Child initiated
- Developing children's interests

# The EYFS curriculum

- Communication and Language
- Physical Development
- Literacy
- Mathematics
- Personal, Social and Emotional Development
- Understanding the World
- Expressive Arts and Design



# What can a day in the life of Reception look like?



Self-register

Phonics

Exploring time with Literacy focused tasks

Story time

Lunchtime

Helicopter Stories

Exploring time with Maths focused tasks

Handwriting

Phonics

Worship

# How will you know?



**ClassDojo**

# How can you help prepare your child for September?

- Talk about school and be excited
- Practise changing in and out of their school uniform
- Maintain a bedtime routine
- Work on a morning routine for school
- Book behaviour
- Tapestry








# Am I ready for school?



I will look great on your fridge!

☺ = I can with help    ☺☺ = I am getting there    ☺☺☺ = I am ready, bring it on!

<b>Self-care and independence</b>	
<ul style="list-style-type: none"> <li>I can go to the toilet</li> <li>I can wash my hands</li> <li>I can wipe my nose</li> <li>I can tidy away my toys</li> <li>I have a good bedtime routine</li> <li>I can share and take turns</li> </ul>	
<b>Speaking and listening</b>	
<ul style="list-style-type: none"> <li>I can join in with rhymes and songs</li> <li>I can follow instructions</li> <li>I am interested in stories</li> <li>I can recognise my name</li> <li>I can talk about myself</li> </ul>	
<b>Getting dressed</b>	
<ul style="list-style-type: none"> <li>I can put my coat on and take it off</li> <li>I can put my shoes on and take them off</li> <li>I can change my uniform and PE kit</li> </ul>	

# How can you help prepare your child for September?


<b>Interested in the world</b>
<ul style="list-style-type: none"> <li>I enjoy learning about the</li> <li>I am interested in explor</li> <li>I like asking questions</li> </ul>

☺ = I can with help    ☺☺ = I am getting there    ☺☺☺ = I am ready, bring it on!

<b>Eating</b>
<ul style="list-style-type: none"> <li>I can use a knife and fork</li> <li>I will eat a variety of food</li> <li>I can sit at the table</li> </ul>

<b>Mark Making</b>
<ul style="list-style-type: none"> <li>I like to use different res</li> <li>I can hold a pencil to make</li> </ul>

<b>Counting skills</b>
<ul style="list-style-type: none"> <li>I enjoy counting objects</li> <li>I can recognise some numb</li> </ul>

<b>Self-care and independence</b>	
<ul style="list-style-type: none"> <li>I can go to the toilet</li> <li>I can wash my hands</li> <li>I can wipe my nose</li> <li>I can tidy away my toys</li> <li>I have a good bedtime routine</li> <li>I can share and take turns</li> </ul>	

# What do you need?\*

## All children (from Reception to Year 6):

White shirt (short or long sleeved)

Dark grey trousers, shorts, skirt or pinafore

Navy jumper or cardigan with school logo

Navy and gold school tie

Grey socks or tights

Any hair accessories must be small and in line with school colours (navy, gold, grey).

Black shoes (please note: open toed sandals and trainers are not acceptable)

## PE Kit:

Light blue polo shirt with school logo

Navy shorts/ skirt

Navy track suit trousers/ jogging bottoms

Trainers (or plimsolls)

Optional: Navy hoodie with school logo (with initials on) – please note that jumpers or hoodies of a different colour are not uniform and the children will be asked to remove them.

**Summer option – after Easter break**

**Summer Dress - blue check**

Our school uniform gives children a pride in their personal appearance and cultivates a sense of belonging to the school.

- Water bottle (not juice/squash)
- Lunch box (if not ordering hot school meal)
- Waterproof coat
- Hat
- **Book bag**
- Wellies to be left at school

\*This is as set out in our school uniform policy as seen in your welcome pack we will provide your child with all the resources they need. In September please send them in with an empty book bag.





# SEND

- Much of the SEND provision will always naturally occur within the classroom context.
- Lessons are pitched appropriately so that all children can learn and progress.
- Teachers take account of the needs of the individual child and plan different tasks and materials appropriately.
- Tracking and assessment enables each class teacher to analyse the progress of the child
- Classrooms are autism and dyslexia friendly environments.

# Reception Needs You!



# How does the school know if my child needs extra help?

We have a number of methods to help us identify if a child needs extra help. These include:

- Speaking to current class teachers
- Feedback from parents/carers
- Information from your child's pre-school or previous school
- Information from previous class teachers
- Information from other services who have worked with your child, for example a speech and language therapists
- Whole school data analysis exercises that occur on a termly basis

This information will be used to create a Individual support plan for your child to ensure that we meet any additional needs your child may have. We will use the Pupil Learning Plan to monitor the progress and development of your child and seek your views and wishes.

It may be considered appropriate that your child participates in small group or 1:1 interventions to help them within a certain area of their learning. The school has a range of small group out of class interventions, including:

- English support – spelling and reading - 1:1 interventions or small groups NESSY programme
- Speech and Language therapy – WELLCOMM and NELI programmes
- Additional phonics support: Essential Letters and Sounds; Toe by Toe
- ELSA - Emotional and Social Support
- Nurture Club
- Sensory Circuits

# Family support worker

- At St Luke's C of E Primary School, we understand that life is not always a smooth ride. With this in mind, we recognise the importance of having someone who families can trust in and talk to.
- Miss Kerry Cutler has been our Children and Family Support Worker for the past 10 years, but has been a very loved member of staff for over 20 years. In this time, she has helped and supported many families across both the infant and junior sites and is able to offer lots of help and advice when needed.
- Miss Cutler (with Mrs Gill – SENDCo) also hosts a coffee morning once a half term, either at the infant site or the junior site, to which everyone is invited and is an ideal opportunity to ask questions or just have a natter to others. Please check the buttons below or our calendar for all upcoming dates.
- Miss Cutler is also able to make referrals to the Nursing Team or the Early Help Team. Please see the links below for support and guidance, including concerns around bedwetting or sleep.
- Miss Cutler can also provide food bank vouchers (dependent on benefits received) and is supported by certain charities, who can help take some of the burden away during special times of the year. Please chat to Miss Cutler about this.
- If you have any further questions for Miss Cutler, please don't hesitate to get in touch via email or via the school office.

# Clubs/Little Acorns

- We offer a variety of after-school clubs each term run by school staff, including netball, football, art and Lego to name but a few. There is a small cost for all clubs.
- We also offer a few 'externally' run clubs: Multi sports/Tennis /Dance /Gymnastics. There is again a cost to the provider for these activities each week.

Watch the weekly bulletin for future news on all clubs.

- We also offer wrap-around care, which includes Breakfast and After School provision. Little Acorns is bookable via the Arbor App. Booking is absolutely essential at least 24hrs before the session.
- Provision starts from 7:30am and runs after the school day to 6pm. Again there is a charge for this provision.

# PTFA Events



Cake sales



Uniform sales and coffee morning



Carols in the Garden



Father Christmas visit



Hot chocolate sale



Discos (Christmas and summer)



Books at bedtime

Where the  
money goes

Books

Playground  
equipment

New rugs  
for the  
classrooms

Props for  
the staff  
pantomime

# Summer Fayre

Please join us at our Summer Fayre on **Saturday 4<sup>th</sup> July** at the Junior site

- Ice cream
- Games
- Tombola
- Raffle
- Uniform sale



# Any questions – please ask!

- We are here for your children but also for you. Starting school is a major milestone in your child's life and we want to make their transition as smooth and enjoyable as we can for the whole family.
- Phone the Infant School Office on 01202 516 499
- Email us at [stlukes@coastalpartnership.co.uk](mailto:stlukes@coastalpartnership.co.uk)