

St Luke's Primary School Travel Plan

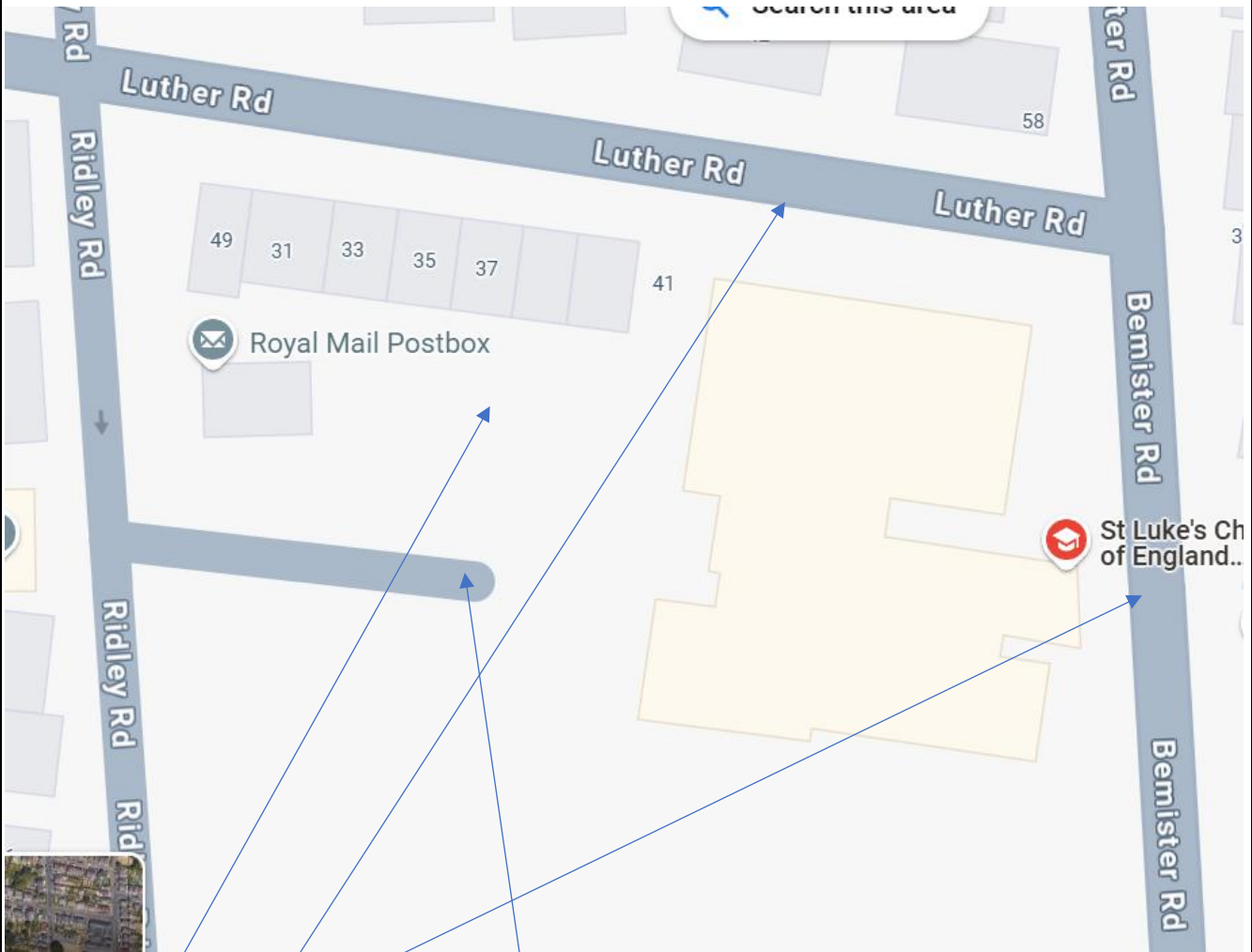


Feb 2025

School details

- Address: Junior Site: **Bemister Road, Bournemouth, BH9 1LG**
Infant Site: **Maxwell Road, Bournemouth, BH9 1DL**
- Number of pupils on roll: 422
- Year groups: Yr – Y6
- Numbers of staff: 40
- Start and finish times including breakfast and afterschool clubs: Extended hours 7:30am till 6pm (school hours 8:40am – 3:20pm)
- Breakdown of the school day:
 - 8:40am: Arrive
 - 8:55am: Registration
 - 9am: Lessons begin
 - 10:30am: Break
 - 10:45am: Lessons restart
 - 12:15pm: Lunch
 - 1:05pm: Lessons restart
 - 3:20pm: End of school day
- Academy Trust: Coastal Learning Partnership
- Most common schools we feed into: Winton and Glenmoor/Bishop of Winchester

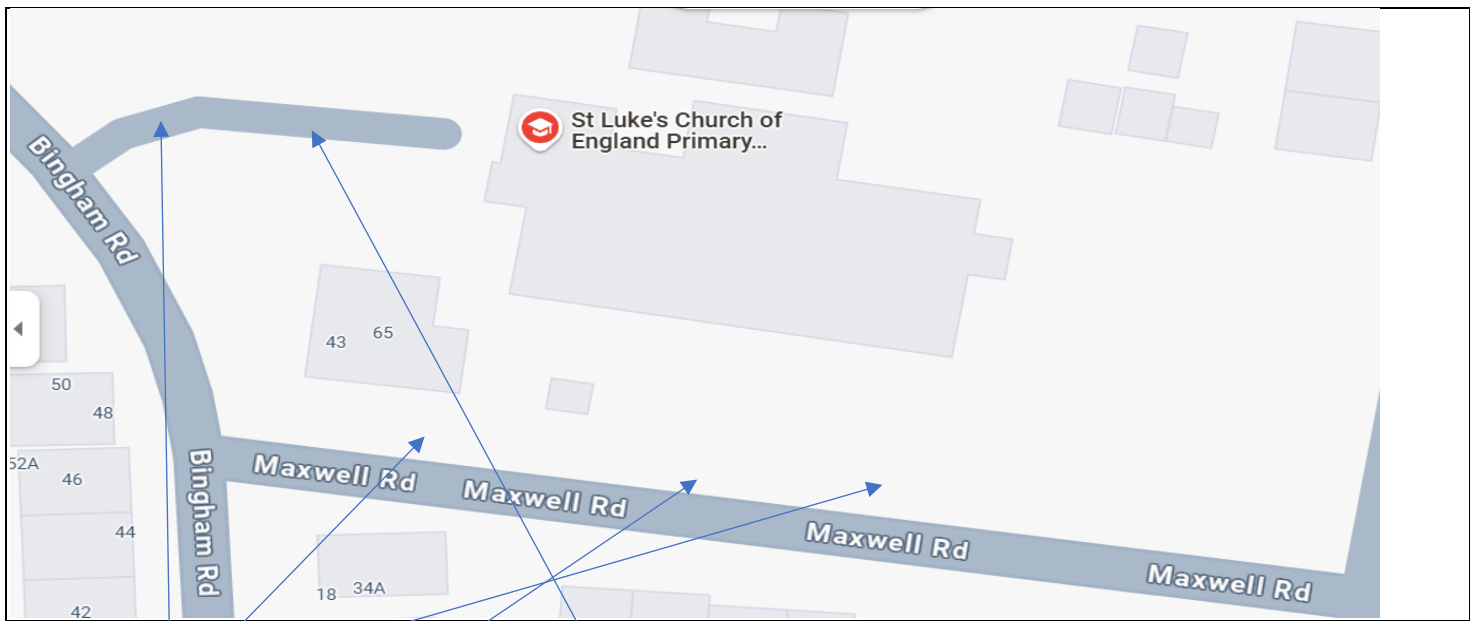
Junior Site



Detail where the following are --

- Pedestrian entrances and exits. Vehicle access and car park
- Cycle and scooter parking

Infant Site



- Pedestrian entrances and exits. Vehicle access and car park
- Cycle and scooter parking

Catchment Area: https://www.coastalpartnership.co.uk/st-lukes-ce-primary-school-1/#:~:text=Catchment%20Area%20Information%20*%20St%20Luke's%20CE,Primary%20School%20%2D%20List%20of%20ca tchment%20roads.

Site Survey of Existing Safety Measures

Speed Limits, crossings, traffic calming etc	<ul style="list-style-type: none"> - What is the speed limit on the roads around the school? 30mph - What is in place to help control the speed of vehicles? Speed bumps on Bemister Road - Are there school warning signs? Yes - Are there speed bumps or traffic calming outside the school or in the surrounding roads? Yes - Is there anything else in place that will slow road users down? No - Where do pupils cross? Infants: Crossing patrol. Juniors: No support in place
Car Parking	<ul style="list-style-type: none"> - What are the parking restrictions outside the school? (no loading, zig-zags, double yellow lines etc) Yes – Zig zags and double yellows outside of both sites. Parking camera outside Juniors
Footpaths/Pavements	<ul style="list-style-type: none"> - Is there a pedestrian crossing outside or near to the school? No - Is the width of the pavement outside school wide enough to cater for all users? Infants – Yes. Juniors is very narrow and this makes it hard to pass anyone with a buggy without walking into the road - Are these pavements shared between cycles and pedestrians? (If so there should be blue signs or markings on the ground indicating this) No

	<ul style="list-style-type: none"> - Are there dropped kerbs where needed? Yes
Separate Entrance for Cars/Pedestrians	<ul style="list-style-type: none"> - Is there a pedestrian only entrance into the school grounds or are pedestrian entrances shared with other users? Pedestrian only accesses to both sites available - Where pedestrians and other users share an entrance, is there a clearly defined pedestrian space, i.e. a pavement or separate footpath? No. Pedestrians and bike/scooter users have to share - Is there an entrance that is used by just cycles and scooters? No
Staff/Visitors Car Parking Available	<ul style="list-style-type: none"> - Is there a school car park? Yes – at both sites - Who can park there and what hours is it open for staff/parents? Staff only but parents use to drop off/collect for breakfast and after school club (Infants) - Do you have parents leaving their engines running when they come to collect/drop off? Some so. Most don't - Does it have a gate or barrier? Yes – both sites. Both usually left open all day - How many spaces are available for staff/students/visitors? How long can users park for? Roughly 15 spaces at each site - How many disabled spaces are available? None marked - Is there EV charging? How many spaces? No - Is priority given to individuals who car share? Not yet but it would be good if we could reduce single occupancy car use and make a percentage of the car park for shared use only (particularly at the Juniors where space is tighter).
Local Car parks	<ul style="list-style-type: none"> - Are there any public car parks close to the school? Yes - How far away are these from school? 400m - Do you use these to promote "park and stride"? Not yet.
Bus Stops and rail stations	<ul style="list-style-type: none"> - Is there a dedicated school bus? No - How far is the nearest public bus/rail stop or station from the school? Do the times of services match up with the school day? Bus – 400m/Train – 2.2 miles
Existing Cycle/scooter facilities (including showers and lockers)	<ul style="list-style-type: none"> - Is there cycle and scooter parking at school? Yes at both sites - Who can use it and is it covered or uncovered? Anyone (staff/children/parents/visitors). Covered at Juniors. Uncovered at Infants. Both can be accessed via the main school entrances and are behind locked gates so they are secure. Access in the school day is still a problem though for visitors. - How many cycles/scooters does it cater for? At least 20 at both sites - Can cycles/scooters be locked by their frames? Yes - Can adapted/cargo cycles be locked there? Yes - Is there cycle parking for parents, visitors or staff accessing the site? Same as for children - Are the shelters behind school gates or open to the public? Juniors – behind school gates - Do cycles get left anywhere informally on the site? Infants – inside fence. It is secure if children bring locks.

-
- Is there separate cycle parking for staff and pupils? No – Juniors. Yes - Infants
- Is there somewhere for staff to shower, change and leave their belongings? Yes – Infants. No – Juniors. Junior staff able to use Infant shower/facilities, if required.
- Is there somewhere that staff and/or pupils can dry their coats etc if they get wet on the way to school? Not really

School Travel Surveys



St Luke's Church of England Primary Schc
 St Luke's Church of England Primary Schc
 St Luke's Church of England Primary Schc

Parents: 73

Staff: 24

Classes: 5

- How are pupils and staff currently traveling to school? Walk/cycle/scoot/car/bus.

Staff

ANSWER CHOICES	RESPONSES	
Walk / Run	29.17%	7
Cycle	4.17%	1
Scoot	4.17%	1
e-Scooter	0.00%	0
Beryl Bike	0.00%	0
Beryl e-Bike or e-Scooter	0.00%	0
Mobility aid	0.00%	0
Car Share (As either driver or passenger)	0.00%	0
Park and walk	4.17%	1
Motorbike	0.00%	0
Bus	8.33%	2
Train	0.00%	0
Drive alone - car or van – Petrol/ Deisel	50.00%	12
Drive alone - car or van – 100% Electric Vehicle	0.00%	0
Drive alone - car or van – Hybrid	0.00%	0
Drive alone - car or van – Plug in Hybrid	0.00%	0
Other (please specify)	0.00%	0
TOTAL		24

Families

ANSWER CHOICES	RESPONSES	
Walk/Run	68.49%	50
Cycle	2.74%	2
Kick Scooter	0.00%	0
e-Scooter	0.00%	0
e-Bike	0.00%	0
Beryl Bike	0.00%	0
Beryl eBike or eScooter	0.00%	0
Mobility aid	0.00%	0
Car share	0.00%	0
Car and walk or scoot	15.07%	11
Motorbike	0.00%	0
Bus	0.00%	0
Train	0.00%	0
Car or van – Petrol/ Diesel	10.96%	8
Car or van – 100% Electric Vehicle	0.00%	0
Car or van – Hybrid	0.00%	0
Car or van – Plug in Hybrid	0.00%	0
Other (please specify)	2.74%	2
TOTAL		73

Children

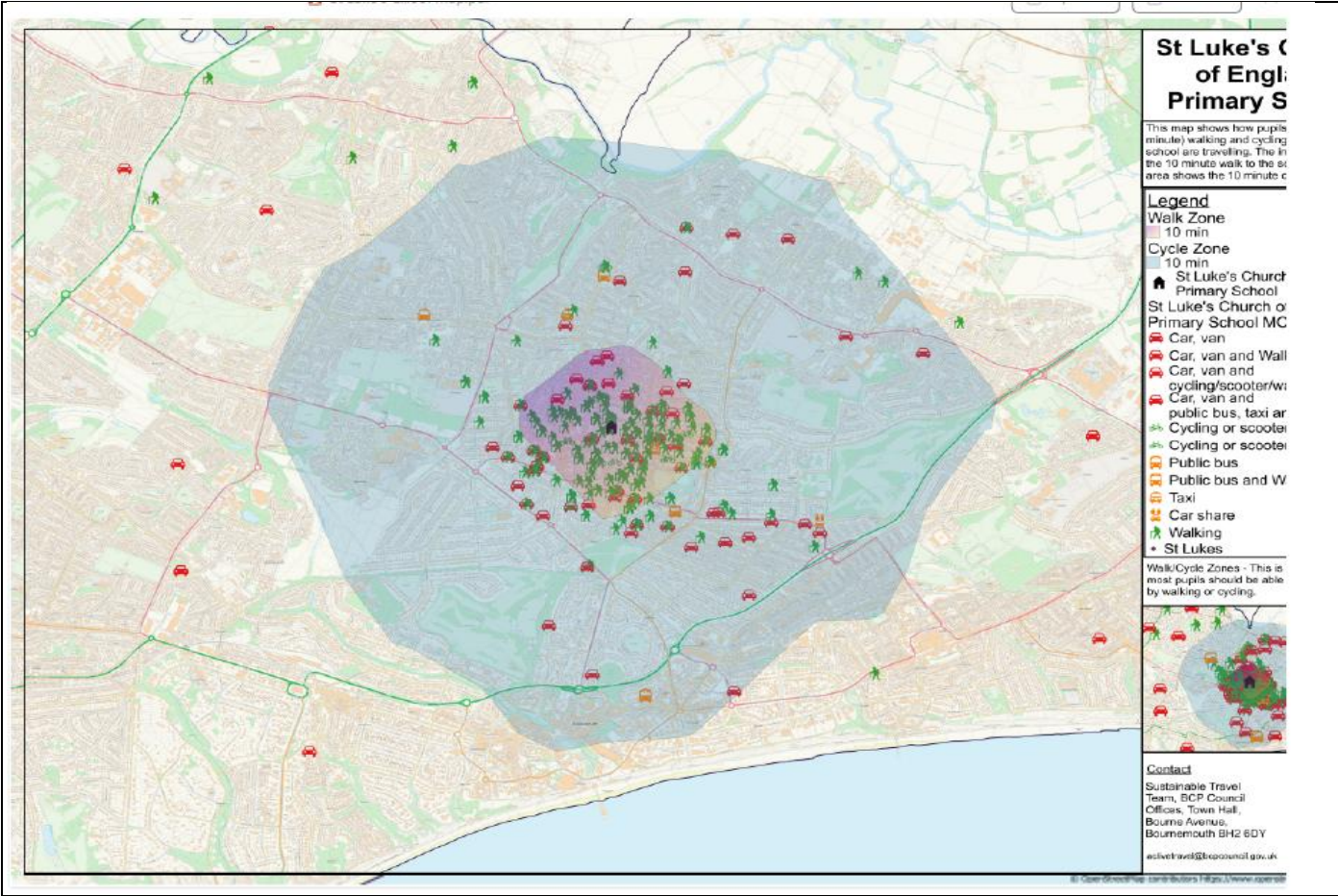
ANSWER CHOICES	AVERAGE NUMBER	TOTAL NUMBER	RESPONSES
Walk / Run	15	76	5
Scoot	3	13	5
Cycle	2	9	5
Mobility aid	0	0	1
Car and walk	6	28	5
Car and cycle	1	1	2
Train	0	0	1
Bus	0	0	1
Car share with siblings	3	8	3
Car share with non family member's	3	3	1
Taxi	1	2	3
Other	3	3	1
Total Respondents: 5			

How do they want to travel? Walk/Cycle/Scoot

- What is stopping them from traveling more actively? Cars on roads. Crossing at juniors. Convenience.
- What do they think could support them? Increased safety around the school site (Juniors in particular). Zebra crossings at both sites.

Mode of Travel data

Does your school collect Mode of Travel data annually via your MIS? Yes



St Luke's Church of England Primary School

This map shows how pupils (10 minute) walking and cycling school are travelling. The inner 10 minute walk to the school area shows the 10 minute cycle zone.

Legend

Walk Zone

10 min

Cycle Zone

10 min

St Luke's Church of England Primary School

St Luke's Church of England Primary School MC

Car, van

Car, van and Wall

Car, van and cycling/scooter/w

Car, van and public bus, taxi or

Cycling or scooter

Cycling or scooter

Public bus

Public bus and W

Taxi

Car share

Walking

St Lukes

Walk/Cycle Zones - This is most pupils should be able to walk or cycle.



Contact

Sustainable Travel Team, BCP Council Offices, Town Hall, Bourne Avenue, Bournemouth BH2 6DY
activetravel@bcpcouncil.gov.uk

Active travel promotion

Website and comms	<ul style="list-style-type: none"> - Is there travel to school information on your website? No OPPORTUNITY - To promote active travel to school and set the expectations of travel we need to emphasise bike/scooter parking to staff and families. - How and what do you promote within the school community to encourage active and sustainable travel to school? We have a travel leader who promotes active travel to school/gives our badges as rewards OPPORTUNITY – To run a regular feature in newsletters and communications to parents, celebration assemblies. Emma L to track active classes. TrackIt points to be given to the most active individuals/classes /phases. - Are new intakes made aware of travel expectations to school? Not yet OPPORTUNITY - Set the expectations early to new parents. Add key information to slides at welcome evening as well as adding key travel info to our welcome pack and also add to website/social media feed/weekly newsletters as well. - Do you make active travel a priority over vehicle use? We’re trying to now - Do you detail this in your school information/prospectus? Not yet OPPORTUNITY – We will now include travel expectations and photographs of children travelling actively to school on our weekly newsletters, social media feed and school website. - Do you encourage active travel to open days and events? Not yet OPPORTUNITY – In order to encourage more active journeys, we will highlight to families/staff and children the benefits to health and of reducing vehicle numbers around the school - Do parents receive regular communications about why active travel is important? Yes
Bikeability	<ul style="list-style-type: none"> - Not used yet...but we’d be keen to get this running. OPPORTUNITY – Contact and set up Bikability to run during the school day as this will maximise both participation and impact.
Incentive schemes and National Campaigns	<p>OPPORTUNITY- To incentivise pupils and keep active travel in the spotlight we will focus on implementing Living Streets WOW and Bike It.</p> <ul style="list-style-type: none"> - Golden Padlock - No - Living Streets WOW outreach program (Primary) – Not yet - Raffles to win prizes related to active travel or to raise money for active travel-related facilities or projects – Not yet - Sustrans Bike it Plus – Not yet - BCP Schools Environment award (Primary) – Not yet - BCP Clean Air for Schools toolkit (Primary) – Not yet - The Sustrans Big Walk and Wheel - Yes - Cycle to School Week - Not yet - Walk to School week / month - Yes - World car free day - Not yet - Road safety week - Yes - Clean air day - Not yet - What other ways are you incentivising active and sustainable travel? Badges given out by travel lead
Road Safety	<ul style="list-style-type: none"> - Do the BCP Council Road Safety team visit the school and run STEPS pupil training? (Years 1 and 4) Yes. This is happening currently in our school - Do you routinely work with the BCP Council Road Safety and Sustainable Travel Teams? We’ve just started to.

School Streets	<ul style="list-style-type: none"> - Have you currently got a School Street in operation? No - Is a School Street something you would support in the future? Yes please
Cycle and scooter parking at school	<ul style="list-style-type: none"> - Is it adequate for what you need for the size and needs of your school? Juniors – Yes. Infants - No <p>OPPORTUNITY – To improve the standard of the cycle parking at the infants – for staff /families /children.</p>

School Trips and activities

Use this section to detail how you travel to regular school activities and further afield trips.

Activity	Current transport	Scope for change
School travel, school trips (including regular activities such as swimming lessons and sports fixtures)	<ul style="list-style-type: none"> - Diesel coach provided by external company - Parent/carer drop off - Walking - School Minibus 	<ul style="list-style-type: none"> - Choose transport provider with a low emission fleet of coaches (if possible) - Car share for parents/carers - Use public transport or walking for shorter journeys - Work with providers committed to sustainability - Aim to reduce the number of individual journeys by travelling as a group - Visit local destinations to avoid long-distance travel - Combine activities to reduce travel frequency

Key school issues

Concern	Solution	Benefits
High levels of children being driven to school	<ul style="list-style-type: none"> - Use the Clean Air toolkit in classes to educate children - Educate parents/carers - Encourage more active travel 	<ul style="list-style-type: none"> - Improved air quality - Health benefits for staff, pupils and residents - Improved education of the school community - Increased active travel and behaviour change
Low levels of pupils cycling/scooting/walking to and from school	<ul style="list-style-type: none"> - Increase uptake of Bikeability in school - Include locations of and information about active travel provisions on website and in pre-admission information - Run incentive schemes - Take part in more national schemes 	<ul style="list-style-type: none"> - Pupils and parents know what's available - Increased parent confidence - Less congestion around school - Improved pupil health - Improved air quality at school - More children actively travelling to school each day

Aims, objectives and targets

	MAIN TARGETS	TARGET DATE
1	To reduce the percentage of pupils travelling to and from school by car from 25% to 10%.	March 2026
2	To increase the percentage of children walking, scooting or cycling at least part of the way to school from 80% to 90%+.	March 2026
3	To increase awareness of lift sharing for those families living further away from school from 0% to 10%.	March 2026
4	To make the area around the school safer for all families by improving our active transport offer to all families: Bike it, Living Streets WOW, Bikeability, use of incentives etc	March 2026

Action Plan

Target	Resource required	Person responsible	Measure of success	Deadline
To reduce % of pupils traveling by car and therefore increase numbers of children walking/ scooting /cycling to school	<ul style="list-style-type: none"> - Staff to monitor and to provide encouragement - Completed STP - Continue with incentive schemes - Bikeability – set up 	Head and Travel lead (Emma L)	<ul style="list-style-type: none"> % of car journeys reduces year on year % of children walking, scooting, cycling increases each year Area around the school safer as less cars on road Parking better for local residents 	Sept 2025
Use the Clean Air Toolkit to educate pupils and parents about the need and expectation to turn off engines when parked	<ul style="list-style-type: none"> - Clean Air toolkit - Newsletters/Website 	MG	<ul style="list-style-type: none"> Parents and children better educated re: importance of clean air. Higher % of families turn cars off whilst waiting 	Sept 2025
To encourage Park and Stride for parents who drive to keep cars away from the direct vicinity of the school and improve safety for those travelling actively.	<ul style="list-style-type: none"> - Newsletters/website/ social media/welcome meeting - Staff to monitor and to provide encouragement - Continue with incentive schemes 	MG/AW/Office team	<ul style="list-style-type: none"> % of car journeys to school reduces % of children walking, scooting, cycling increases Area around the school safer as less cars on road 	Sept 2025
To keep active travel in the spotlight we will look to implement Living Streets WOW and Bike It.	<ul style="list-style-type: none"> - Newsletters/website/ social media/welcome meeting - Living Streets Wow/Bike It resources 	MG/Office team	<ul style="list-style-type: none"> Parents and children better educated re: importance of active travel Incentives set up enable: % of car journeys to school to reduce, % of children walking, scooting, cycling increases Area around the school safer as less cars on road 	Sept 2025
To communicate effectively to staff and families about active travel to work/school.	<ul style="list-style-type: none"> - Newsletters/website/ social media/welcome meeting - Incentives 	MG/Office team	<ul style="list-style-type: none"> Parents and children better educated re: importance of active travel Area around the school safer as less cars on road 	Sept 2025

Sign off

Name	Role	Signature	Date
Martin Godfrey	Head Teacher	Martin Godfrey	20/2/25
Jonathan Thomson	BCP Council Travel Planner	Jonathan Thomson	20/02/25